



annual
community
report

2007- 08



eliminating racism
empowering women

ywca

west central michigan

a community report card - a plan for the future

Dear Friends,

The past year has been a momentous one for the YWCA, marked by recognition for our work to eliminate racism as well as sound fiscal management, expanded programming, strengthened community partnerships, and initial steps to revitalize our building so that it better meets our clients' needs.

In 2007, the YWCA proudly endorsed the establishment of "Partners For A Racism Free Community" designed to provide our community with the professional guidance, resources, support and recognition needed to achieve diversity goals. The YWCA also participated in PRFC's formalized credentialing process in order to become one of Grand Rapids' first organizations to achieve status as a PRFC Provisional Member.

Financial forecasting became more difficult as our community moved toward some of the most challenging economic times in recent memory. Yet, bolstered by a diverse range of funders, successful fundraising activities, and strong financial management, the YWCA is positioned to weather the storm. A professional financial review of FY 2007-08 underscored the YWCA's soundness, producing an unqualified opinion from our auditors once again.

The YWCA was awarded funding to establish our community's "Responsible Fathers and Healthy Co-Parenting Program". Designed to prevent future abuse and give families the tools for safe, healthy interactions, the program enhances our current work with domestic violence assailants and families where there has been stalking, sexual assault, sexual abuse, or domestic violence.

The YWCA Training Center officially opened its doors with the goal of strengthening area service providers' clinical skills. We offered courses on domestic violence prevention and effects; compassion fatigue and vicarious trauma; stalking; sexual abuse; and sexual assault. The effort proved successful - 98% of attendees reported a dramatic increase in their understanding of domestic and sexual violence. In the same vein and planned for 2008-09, the YWCA will open our internal New Service Provider Training to our partners - Safe Haven Ministries and the Hispanic Center of Western Michigan - along with other partner organizations in the community.

As 2007-08 came to a close, the YWCA Board of Directors took a keen look at the organization's most pressing future needs and voted to take formal steps in developing a capital campaign to address significant facility concerns. This will be the first time in 15 years that investment has been sought for comprehensive capital improvements. Initial steps will include focus groups which are anticipated to begin in 2009-10.

In all that we do, we are guided by our mission - *eliminating racism, empowering women*. Our strategic goals aim to strengthen our position as an Employer, Provider, Partner, and Financial Steward of Choice. We incorporate client feedback as part of our accreditation process and ongoing quality assurance objectives that evaluate YWCA programs and operations. Throughout, the YWCA relies on our friends and investors. As this report shows, these partnerships are invaluable in moving our organization and our community forward. Your role in this is deeply appreciated.



Jessica Kurylowicz,
Chairperson
Board of Directors



Caroline "Carla" Blinkhorn,
President/CEO

YWCA services work in concert to address the issues of violence against women and children which undermine individuals, families, and our community. With comprehensive services, participation in community-based solutions and ongoing education, our vision is a community that demonstrates a commitment to creating a nurturing, violence-free environment for women and children.

The YWCA's Domestic Violence Services have been an integral part of our programming since 1977. We are one of Michigan's leaders in responding to the issue of domestic violence. Our services have evolved to include crisis intervention, emergency shelter, specialized counseling for victims and assailants, programs that teach healthy parenting techniques, supervised parenting time and safe child exchange, medical-forensic examinations, and a long-term transitional housing component designed to equip women so they can better support themselves independently and live free from violence after they transition out of the shelter.

For families experiencing the trauma of incest and non-familial molestation, there are the **YWCA Child Sexual Abuse Treatment Services**. Components of our treatment program include individual, family, marital, and group counseling, as well as, educational and support groups.

Noted as one of the most comprehensive programs in Michigan, the **YWCA's Sexual Assault Services** include critical crisis intervention, individual and group therapy, and short-term respite services for victims unable to return home. The YWCA's Nurse Examiner Program is also our community's resource for medical-forensic sexual assault examinations for patients 13 years and older.

girls incorporated®
at the ywca west central michigan

Girls Incorporated® at the YWCA West Central Michigan

offers programs designed to build girls' self-esteem and confidence, help them set boundaries, and develop healthy relationships with adults – all key elements to reducing girls' vulnerability to violence. As Michigan's first Girls Inc.® affiliate, we offer programs that teach self-defense and violence prevention; adolescent pregnancy prevention; media and economic literacy; skills to resist pressure to use harmful drugs; skills that increase self-confidence in science, math, technology and related careers; and leadership development.

**a place of hope, healing,
and renewal since 1900**

program service report

child sexual abuse treatment services



The trauma of childhood sexual abuse is carried with its young victims for a lifetime. The devastation is apparent. Child victims fall into depression, drug and alcohol abuse, and teenage prostitution at much higher rates than their peers. They often struggle in school and later on as adults,

they are more vulnerable to sexual assault and domestic violence.

Healthy families are fundamental to a child's healing. Of the cases referred to us by Children's Protective Services in 2007-08 and where parental rights had not already been terminated, we were able to help 89% of children to safely return home to the care of a parent. Of the children who ended treatment, 80% showed an increased ability to cope with their experiences and to move forward. In total, the YWCA worked with 868 child victims and family members this year.

sexual assault services

The importance of supporting sexual assault victims is profound. Without trauma counseling, sexual assault victims are 3 times more likely to suffer from depression; 13 times more likely to abuse alcohol; 26 times more likely to abuse drugs; and 4 times more likely to contemplate suicide. However, the YWCA continues to demonstrate its effectiveness at reducing these symptoms and helping victims to heal. Of the victims who participated in YWCA therapy this year, 83% showed a better ability to cope with their experiences and a reduced vulnerability to future assault.

Yet, within the local Hispanic community, critical information about sexual assault and available resources is not making it through to victims. Concerned that Latinas do not access the YWCA's Nurse Examiner Program in numbers that reflect the local Hispanic community's size, the YWCA established a partnership with the Hispanic Center of Western Michigan. The goal is to reduce the unique barriers to service that exist for many Latinas and provide meaningful supports to victims where they feel the most comfortable.

Looking forward, the collaboration will begin work to provide substantive, in-depth service-provider training to staff from the Hispanic Center and extensive cultural-competency training to YWCA staff members.

domestic violence services

Law enforcement identifies over 3000 victims of domestic violence in Kent County each year. In 2007-08, the YWCA served an equal number of people throughout the range of our domestic violence services (2403 via crisis services and counseling; 604 via emergency shelter and longer-term housing). The YWCA's impact is profound. In 2007-08, of those who participated in 2 or more YWCA crisis/advocacy sessions, 82% were able to develop a safety plan. Of those who participated in longer-term counseling, 82% reported greater stability and safety in their homes and community.

The scope and the devastation of this crime require realistic, effective solutions that look beyond victim-only services. This year, the YWCA took steps to move our community further in this direction after receiving a federal grant award to establish a "Responsible Fathers and Healthy Co-Parenting Program". The service will help families who participate in the YWCA's supervised parenting time and safe child exchange program. Specifically, participants will learn the skills they need to be healthy parents for their children. The doors are slated to open next year.

Our community partners are vital links in reaching domestic violence victims. Next year, Safe Haven Ministries and the 61st District Court's Domestic Assault Response Team will begin to actively refer victims to the YWCA Nurse Examiner Program's pilot program, which provides medical-forensic examinations. Continuing to look forward, the YWCA is working to establish a partnership with the Grand Rapids Women's Health Center (a consortium of private medical practices). The goal of which will be to help develop screening protocols that aid medical staff in private practice to identify victims and safely connect them to life-saving resources.

girls incorporated®

at the ywca west central michigan

Girls Inc.® is a vital part of the YWCA's work to help keep girls safe. In 2007-08, we reached over 900 girls through our school-based and after-school programming, summer programs, and individual workshops and forums. Evaluations found that 95% of the girls who participated in a Girls Inc.® core program showed an increase in their commitment to learning and self-esteem. Further, 92% of participants demonstrated skills that increased their personal safety.

The coming year offers us the opportunity to direct greater programming resources toward middle school girls as our largest partner, the Grand Rapids Public Schools, begins implementation of a significant reorganization plan. By reaching girls earlier and giving them the skills they need at a younger age, the YWCA's effectiveness in reducing their vulnerability to violence over the long-term is anticipated to significantly increase.



ywca board of directors 2007 - 2008

YWCA West Central Michigan board members are charged with governance of the organization. Board members actively oversee the YWCA's finances and monitor compliance with best practice standards. They also participate in private fund-raising and community outreach efforts, as well as, develop organizational advocacy policies based on the YWCA's strategic plan, mission, and vision.

Potential new members are identified by a nominating committee comprised of community leaders, volunteers and current board members. A slate of candidates is voted upon annually by the YWCA Board of Directors. New members are chosen based on a proven commitment to the YWCA mission and their ability to support the organization as it works to meet that mission.

In 2007-08, the board enhanced its selection process by broadening the role of the nominating committee. The renamed YWCA Board Governance and Nominating Committee is responsible for training opportunities for current members and standardizing outreach activities where potential board members are identified.

The board's financial oversight was key to the YWCA's strong audit performance this year which resulted in receipt of an unqualified opinion. Board members were also active fundraisers for the YWCA, helping secure over \$500,000 in private revenue.

Jessica Kurylowicz
Chair

Elsa Kerr
Vice Chair

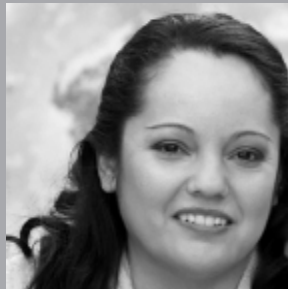
Deb Schutmaat
Treasurer

Lisa DeFerrari
*Development
Committee Co-Chair*

Jessica Murphy
*Development
Committee Co-Chair*

Caroline "Carla"
Blinkhorn
President/CEO

Corey Brown
Mary Gill-Thornton
Stan Greene
Gail Hammontree
Ingrid Jensen
Shirley Lewis
Julie Marshall
Mike Melinn
Rachel Mraz
Shlynn Rhodes



statement of activities

(Oct. 1, 07 - Sept. 30, 08)

	Unrestricted	Temporarily Restricted	Permanently Restricted	Total
Public Support and Revenue				
Contributions and nongovernment grants net of bad debt of \$190	\$ 207,376	\$ 124,175	-	\$ 331,551
United Way	\$ 388,645			\$ 388,645
Special events - less expenses of \$64,596	\$ 59,443	\$ 88,940		\$ 148,383
Government grants	\$ 2,080,233			\$ 2,080,233
Income for outside trust funds	\$ 26,593			\$ 26,593
Program fees, net of bad debt of \$3,091	\$ 190,906			\$ 190,906
Interest and dividend income	\$ 32,987	\$ 9,123		\$ 42,110
Membership dues	\$ 1,000			\$ 1,000
Unrealized loss on revaluation of beneficial interest in outside trusts			\$ (144,534)	\$ (144,534)
Unrealized loss on revaluation of beneficial interests, Grand Rapids Community Foundation			\$ (10,974)	\$ (10,974)
Realized and unrealized loss on investments	\$ (196,163)			\$ (196,163)
Loss on disposal of property and equipment	\$ (815)			\$ (815)
Net assets released from restrictions				
Satisfaction of donor restrictions	\$ 156,132	\$ (156,132)		-
Expiration of time restrictions	\$ 110,870	\$ (110,870)		-
TOTAL PUBLIC SUPPORT AND REVENUE	\$ 3,057,207	\$ (44,764)	\$ (155,508)	\$ 2,856,935
Expenses				
Program services				
Counseling programs	\$ 1,220,208			\$ 1,220,208
Housing	\$ 1,188,761			\$ 1,188,761
Youth programs	\$ 200,335			\$ 200,335
Special programs	\$ 2,026			\$ 2,026
Center for Women	\$ 153,890			\$ 153,890
Support services				
Management and general	\$ 328,824			\$ 328,824
Development and special events	\$ 134,586			\$ 134,586
TOTAL EXPENSES	\$ 3,228,630	-	-	\$ 3,228,630
CHANGE IN NET ASSETS	\$ (171,423)	\$ (44,764)	\$ (155,508)	\$ (371,695)
Net Assets at Beginning of Year	\$ 3,493,237	\$ 655,241	\$ 1,107,314	\$ 5,255,792
NET ASSETS AT END OF YEAR	\$ 3,321,814	\$ 610,477	\$ 951,806	\$ 4,884,097
TOTAL ASSETS				\$ 5,628,958
TOTAL LIABILITIES				\$ 744,861
TOTAL NET ASSETS				\$ 4,884,097
TOTAL LIABILITIES AND NET ASSETS				\$ 5,628,958

**Decreases to net assets are a result of negative investment market activity and are unrelated to program operations.*



2007 Title Sponsor



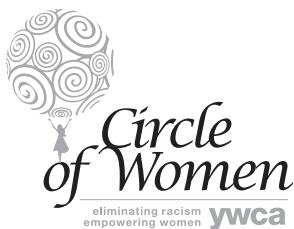
2007 Premier Sponsors



CHERYL GRANT
A Trusted Name in the Grand Rapids Real Estate

2007 Award Honorees (l-r)

- Pearl Shangkuan, *Arts*
- Aqueelah Seifullah, *Student Honoree and Judy Lloyd Leadership Award Recipient*
- DeDe Esque, *Advocacy*
- Peggy Bishop, *Community Service*
- Mary Kay Kempker-VanDriel, *Sports, Fitness & Wellness*
- Laura Knapp, *Professions*
- Nancy Hickey, *Business, Management, Industry & Labor*



2008 Title Sponsor



Keynote Speaker: Patricia Howard, Girls Inc.® National Office



Photo courtesy John Corriveau Photography

25th Annual Women Lawyers vs. Judges Charity Softball Game

hosted by the Women Lawyers Association of Michigan-Western Region

private community support

Private, community support allows the YWCA to address operational and emergency needs, participate in valuable strategic initiatives, and fill gaps that would otherwise remain for the women and families whom we serve. The YWCA's annual community fundraisers - Circle of Women and TRIBUTE! - raised more than \$150,000.00 (net) to do just that.

In 2007-08, the YWCA secured investment from 252 new donors and increased the number of individuals who repeated their investments by 29%.

The YWCA was also the grateful beneficiary of community events that were organized on our behalf. Celebrating its 25th anniversary in 2008 was the Women Lawyers vs. Judges Charity Softball Game which raised over \$10,000 for YWCA services.

community support - fiscal year 2007-08

Heart of West Michigan United Way

Government Funders

Kent County
Kent County Department of Human Services
Michigan Department of Community Health – Victims of Crime Act
Michigan Department of Human Services
Michigan Domestic Violence Prevention and Treatment Board
Michigan State Housing Development Authority
United Way of America
Emergency Food and Shelter National Board Program
U.S. Department of Health and Human Services
U.S. Department of Housing and Urban Development
U.S. Department of Homeland Security
U.S. Department of Justice - Office of Violence Against Women - Kent County Fiduciary

Private Support

Grace Dyer Hunting Circle

(\$5,000 +)

As one of the YWCA's early leaders, Grace Dyer Hunting led the capital campaign in the early 1920s to build our current Sheldon Boulevard facility. She inspired her fundraising committee to raise \$567,000 in just seven days.

Altacor Enterprises
Amos Fund
John and Margaret Bertsch Charitable Foundation
Fifth Third Bank
Gill Industries
Cheryl A. Grant
M.E. Davenport Foundation
William E. & Mary S. Malpass Fund
Marjorie Talhelm Estate
Mayflower Congregational Church
Nokomis Foundation
Sebastian Foundation
Steelcase Inc.
Nellie Stevens Trust
Thomas M. Cooley Law School
TrimQuest
Westminster Presbyterian Church

Helen J. Claytor Circle

(\$1,000 - \$4,999)

Civil rights leader, Helen Claytor blazed the trail for later generations when she became our association's board president in the late

1940s and again in the mid-sixties when she assumed the position of board president of the YWCA of the USA.

Agent Alliance Corp.
Aon Consulting
Audrey's Place
Debra Ann Bailey
Barnes & Thornburg LLP
BDO Seidman, LLP
Beene Garter LLP
Best Buy Children's Foundation
Kenneth and Judy Betz
Caroline "Carla" and Scott Blinkhorn
The Blodgett Foundation
Blue Cross Blue Shield of Michigan
Kimberly and Christopher Branoff
Calvin College
Canteen Services Inc
Cascade Engineering
Mary Pat Chelsky
Lisa DeFerrari
Dematic Employee Association
Elizabeth and Stanley Dole
Julie Duisterhof and Randall S. Damstra
East Kentwood Big Give
Emergency Care Specialists
Madeline Erickson
Ernst & Young, LLP
William Gilbert
Gild the Lily
Margaret E. (Meg) Goebel
Golf Systems, Inc.
Goodwill Industries
Grand Rapids Adjusters Association
Grand Rapids Community College
Grand Rapids Community Foundation - Youth Grant Committee
The Grand Rapids Press
Grand Rapids Women's Health PC
Grand Valley State University
Donald and Doris Griffith Foundation
Grotenhuis
Gail Hammtree
Herman Miller Foundation
Nancy Hickey
Dirk and Victoria Hoffius
Kyle and Win Irwin
Irwin Seating Company
Irwin Union Bank
J. P. Demody, Inc.
Susan M. Jandernoa
Elsa Kerr
Shirley K. and Albert M. Lewis
Susan Lewis
Liesl A. Maloney
Marilyn F. Martin
Mary Free Bed Rehabilitation Hospital
Metro Health Hospital
Michigan Women's Foundation, Young Women for Change
Mika, Meyers, Beckett & Jones, PLC
Bonnie K. Miller
Rachel Mraz
Norris, Perne & French LLP
Northern Trust Company

Oppenheimer & Company Inc.
Louis and Helen Padnos Foundation
Preferred Benefits, Inc.
Wendie and David Preiss
Pridgeon & Clay, Inc.
Reagan Marketing + Design, LLC
Ridgeview Industries
Saint Mary's Health Care
Gail Scott
Michael Shields
Smith Haughey Rice & Roegge
Spectrum Health
Jenna Spica
State Farm Insurance
Wendy L. Stock
Summit Training Source, Inc.
Target Stores
UAW Local 6000
United Bank of Michigan
Unity Christian High School
US Trust/Bank of America
Michelle and Michael VanDyke
Vanguard Charitable Endowment
Varnum Riddering Schmidt Howlett LLP
Vi-Chem Corporation
Warner Norcross & Judd LLP
Wege Foundation
West Michigan Chemical Coaters Association
West Michigan Christian Foundation
Rita Williams and John Gill
Wolverine World Wide, Inc.
Women Lawyers Association of Michigan-Western Region
Robert and Aleicia Woodrick
WZZM TV13
Zormot International, Inc.

Jean McKee - Presidents' Circle

(\$500 - \$999)

Educator, attorney, social activist and later candidate for the Fifth Congressional District, Jean McKee led the organization as its board president during the tumultuous times following the local race riots in 1967 and 1968.

B&B Contractors, Inc.
Margaret W. Bishop
Susan K. Broman
Fredric and Carolyn Brown
Brenda Burch
Linda Burpee
Citi Smith Barney
Clark Hill PLC
Consumers Energy
Janice Cornelius
Thomas Cottrell
Cassandra B. Daller
Barbara J. DeMoore
Sandra A. Davison-Wilson
Dodds Trust
Drew, Cooper & Anding, PC
Robin M. Dykhouse
Evelyn K. Eister
Jennifer L. Faber
Kim Fedrigo
First United Methodist Church
Fishbeck, Thompson, Carr & Huber

Founders Bank & Trust
 Patricia D. Gardner
 Virginia Gearhart
 Jill Gebben and MSU Friends
 Mary Gill-Thornton
 Marjorie B. Goebel
 Stan Greene
 Patricia A. Haist
 Diane Hedeman
 Jeannie Hosey and Tony Travis
 Integrated Building Solutions
 Susan Jazwicz
 Gayla Jewell
 Ora B. Jones
 Carol J. Karr
 Alix Kayayan & Ron Kragt
 Sheila A. Kinney
 Birgit M. Klohs
 Laura Knapp
 Laboratory Pathologists, P.C.
 Law Weathers & Richardson, PLC
 Leon Plastics
 Lighthouse Insurance Group
 Louis Padnos Iron & Metal Company
 Elizabeth Welch
 Lykins
 Macatawa Bank
 Susan Mason
 Margaret A. McCrystal
 Meijer Inc.
 Mike Melinn
 Michigan Community Blood Centers
 Michigan Medical, P.C.
 Barbara J. and Daniel C. Molhoek
 Jessica Murphy
 Carol and Jon Muth
 Mary and James Nelson
 Marianne and Steven Parker
 Paul Goebel Group
 Laurie Pawlowski
 Phyllis and Harold Penny
 Performance Systematix, Inc.
 Perry & Stuursma, LLP
 Julie Denko Petrie
 Rhett and Jeralyn
 Pinsky
 Plante & Moran, LLP
 Plymouth Congregational Church UCC
 Porter Hills
 James and Marie Preston
 Pricewaterhouse-
 Coopers
 Priority Health
 Deb Schutmaat
 Kendra Segovia
 Shaggy Pines
 Dog Park
 Gary Shawn
 Denise Sherwood
 Patricia H. Siciliano
 Janette E. Tazzia
 Beth Ann Townsend

Kris Vanden Berg
 Dr. Juli S. Wemmer
 West Michigan Women's Studies
 Bridget White
 Dolores A. White
 WOOD TV8
 Doug and Sharon Wynkoop
 Dr. Barbara and Gilbert Wynn

Francis Rutherford & Emma Wanty Circle (\$100 - \$499)

Dr. Frances Rutherford, *the first female city physician in the U.S., directed her commitment to women's health toward the establishment of the YWCA's predecessor organization – the Women's Gymnasium and Noon Rest – in the late nineteenth century. Rutherford and others, including Dr. Emma Wanty whose extraordinary fundraising ability and active leadership in numerous offices, helped establish the YWCA and strengthened its position as an important community resource.*

A. B. Dick Products of West Michigan
 Maureen A. Abele
 JoAnn Abraham
 Access Business Group
 Ethel A. Ackerson
 Activa Benefit Services, LLC
 Adamy + Company, P.C. - CPAs and Consultants
 D. Adewusi
 Anne Ager-Krill
 Christine C. Albertini
 Bob and Wende Alighire
 Margaret Elizabeth
 Allen
 Allied Electric
 Francesca Amari
 Barbara W. Amberg
 Christine Ambrecht
 Catherine Amodeo
 Dana Anderson
 Melissa J. Anderson
 Margo Anderson
 Joan Andrew
 Donald and Ellen Arlinsky
 The Armenta Studio
 Tina Bain
 Lori J. Baker

Susan Bakkila
 Brenda Ball
 Elizabeth Banta
 Christine Barfuss
 Susan Morales Barias
 Kathi Barkan
 Tina Barnikow
 Mary Jo Baweja
 Laurie Beard
 Annette Beatty and John Little
 Belle Tire
 Connie Bellows
 Janet F. Bennett
 Rosemary Bennett
 Honorable Robert A. Benson
 Berger Chevrolet, Inc.
 Vickie and Tom Bergers
 Jacqueline Marie Bess
 Bethel Lutheran Church
 Jeanine Biese
 BKC Insurance, Inc.
 Leslie C. Black
 Helen Blinkhorn
 Diane Boozer
 Kristin Borgman
 Marcia Borowka
 Elizabeth E. Borre
 Bos & Glazier PLC
 Laura Bouch
 Patty Bouwhuis
 Ann Bower-Jackson
 Ruth Ann Brevitz
 Corey Brown
 Michael Brown
 Doris J. Brownridge
 Maria Brummel-Schutte
 Sarah Bryska
 Buchanan & Buchanan, PLC
 Janean M. Buckborough
 Lorilee Bultinck
 Julie A. Burns, CPA, PC
 Betty S. Burton Groce
 Sharon Burtrum
 Bobbie Butler
 Kathleen Buttke
 Anna Moore Butzner
 Kathleen S. Byers
 Debra S. Byl
 Charles and Lucy Caldwell
 Ann E. Cameron
 Nikole Canute
 William Casey
 Tracey and Richard
 Cassard
 Susan Celadilla
 Amy O. Chambers
 Ingrid K. Cheslek
 Julie M. Chicklon
 Robert and Jackie Chovanec
 Constance Christenson
 Sandy Cilek
 Citigroup GIFT
 Joellen Donnelly Clary
 Judith A. Claytor
 ClearStream Title
 Kelly Clum-Matthysse
 Doti Clune and Jill Henemyer
 Steven Cole
 Paul and Chrissy Cole
 Jennifer Coles

Mary C. Command Community Foundation for Southeast Michigan
 Sue Conway
 Carrol J. Cook
 Eva Aquirre Cooper
 Corrigan Moving Systems
 Sandra L. Cottingham, MD
 Covenant Community Church
 Candace Cowling and Klaas Kwant
 Kathy S. Crosby
 Andrea Crumback
 Crystal Flash Energy
 Jennifer L. Czekai
 Shirley K. Perkins Daniels
 Pam and Andy Daugavietis
 Patricia K. Davis
 Jean and Charles Day
 Lois De Boer
 Robert and Kay Griffith Hammond
 Robert and Lois DeBoer
 James and Marianne Delavan
 Kirsten Delvecchio
 Peggy A. DePersia
 Mihi H. Dewes
 Dr. Mary DeYoung
 Dilley, Dilley, Murkowski & Goller
 Barbara Dillon and John Witham, Jr.
 Lorna Dobson
 Linda Doering and Judy Willard
 Mary Doering
 Amy Donohue
 Nancy L. Douglas
 Jill V. Dover
 Beverly A. Drake
 Hester Duncan-Willis
 Steffany Jo Dunker
 Kayem Dunn
 Christine Dunnuck
 Dykema Gossett, PLLC
 Dykema Law Offices
 Julie Dykstra
 Janice Earl
 Louise Eastman
 Cheryl G. Edwards-Cannon
 Emily A. Eichenberg
 Norman Elam
 Karen Elbert
 Elders' Helpers LLC
 Jeanne A. Englehart
 Sue Ernzer
 DeDe Esque
 William and Patricia Faber
 Femi Fadayomi
 Kathy Farquharson
 Pamela J. Farrer-Cross
 Valerie Feehan
 Cecile Fehsenfeld
 Stephanie Fekkes
 Sheryl R. Fett
 First Congregational Church
 Barbara and Charles Fisk
 Kecia A. Flynn

Laurie and Al Forte
 Andrea A. Fotias
 Fountain Street
 Church
 Rosa Fraga
 Sheila D. Frank
 Deborah J. Fraser
 Amy L. Freeburg
 Dorothy Freeman
 Catherine E. Frerichs
 Mary Caroline Frey
 and Jim McKay
 Frey Foundation
 Friend Foundation
 GAP Employee Giving
 Campaign
 Laurie M. and
 Donald S. Gardner
 Maureen S. Gebben
 Falinda Geerling
 Rhonda Getz
 Kathleen M. Gietzen
 Richard and
 Linda Glaser
 Nancy and
 Robert Gleffe
 Bridget Tucker Gonder
 Martha Y.
 Gonzalez-Cortes
 Sarah L. Gooden
 Kristin Gootjes
 Barbara and
 John Gracki
 Grand Rapids
 Women's Chorus
 Grand Summit
 Properties
 Carlene Grassmid
 Carol E. Greenburg
 Wilhemenia Greene
 Gloria Gregory
 Barbara L. Griffin
 Carol Griffin
 Julia Guevara
 Kathleen Guider
 Meg Hackett
 Karin Hagyard
 Bob Haight
 Danielle Hall
 Betsy Haller
 Erin E. Hamilton
 Paula J. Hamson
 H. Renee Hampton
 Steve Handeland
 Terri Handlin
 Kim Hanrahan
 Hartford Life
 Insurance Group
 Madelon and
 Kurt Hassberger
 Jaclyn Haverdink
 Cheryl Haynes
 Janet A. Haynes
 The Hehl Family
 Foundation
 Hester and Todd
 Hendricks
 Janice A. Henry
 Joyce M. Henry
 Jeanne Herold
 Pauline Hewitt and
 Gerard Schaefer
 Dorothy Tegner
 Hodgkins
 Michelle Hoexum
 Allison Holifield
 Carol A. Horner-
 Harrington
 Charlotte Howard-
 Holland

Kimberly A. Hughes
 Sonya Hughes
 Kristine L. Huizen
 S. Katherine
 Humphrey
 Noreen and Kenneth
 Hungerford, II
 Hurst Inc.
 Amy Iager
 Joyce Ignasiak
 Susan Im
 Innovative Solutions
 Interconnect
 Transportation, LLC
 Dale Ann Iverson
 Julie Jacobs
 Roberta A. Jacobson
 Phillip and
 Cherry Jacobus
 Ellen M. James
 Lynn Jekkals
 Jaye and Rich Jelier
 Leigh M. Jennings
 Ingrid A. Jensen
 Nels and
 Penny Jensen
 Nancy Jesko
 Latharee Helen
 Johnson
 Robert J. Jonker
 Jennifer L. Jordan
 JPMorgan Chase
 Julianne
 Kanazeh-Gordon
 Kane & Trap Court
 Reporting, Inc.
 Linda Kanski
 Sherry Kasper
 Madelyn M. and
 Mark A. Kehoe
 Bridget Kehoe-Howell
 Robin and
 William Keith
 Keller Foundation
 Alice Kennedy
 Mary Kenyon
 Tammy Kerr
 Teresa M.
 Kinney-Gent
 Helen Kinsworthy
 Myrna Kirschner
 Georgianna T. Klein
 Sheila Knopke
 Nancy Kocsis
 Barbara Kravitz
 Kay M. Kreamsreiter
 Robert Kring
 Anna M. Kruse
 Kruse Design LLC
 Dana Kryzak
 Rebecca and
 Rex Kuhn
 Kuiper Orlebeke, PC
 Marjorie Kuipers
 Jessica Mariucci
 Kurylowicz
 Julie Lam
 Deborah Poeder
 Barbara and
 John Langan
 Kelli Langan
 Marilyn Lankfer and
 Jeffrey Schad
 Jennifer Lapus
 Valeri R. Lawson
 Mary Esther Lee
 Lynn LeHocky
 Greer Lerchen
 Marcella T. and
 Mark J. Lewis

Ann E. Liefer
 Lincoln Financial
 Group
 Catherine Ann
 Lindland Young
 Mary Lou Logan
 Thomas and
 Anne Logan
 Carol Rose Lopucki
 Karen Loth
 Mary B. Loupee
 Ana Lordes
 Schoonmaker
 Katherine Love
 Nancy and
 Don Lubbers
 Cathy Luders
 Janis A. Lunquist
 Lykins Law, P.C.
 Heidi Lyon
 The Mackraz Law Firm
 Cynthia E. Mader and
 Pamela K. Olsen
 Debra Maintz-Evans
 Theresa and
 Todd Mairn
 Lena Mammen
 Deborah P. Mankoff
 George Mansell
 Jon and Mary Ann
 March
 Matthew Marion
 Julie Marshall
 June L. Marshall
 Edna C. and
 Ronald H. Martin
 Megan Martin
 Miriam Martin
 Toni Rawlings Martin
 William and Inetta
 Martindill
 Wendy T. Marty
 Agnes Masselink
 Elaine Maternowksi
 Theresa L. Matthews
 Gerilyn J. May
 Michael J. May
 Deidra J. McClelland
 Sheila McCue
 Suzannah J.
 McCullough
 Dean Cynthia Ann
 McCurren
 Marilyn McGovern
 Eileen Joy McKeever
 Molly McManus
 MaryBeth and
 Timothy Mead
 Med 1 Breton
 Debra M. Medina
 Mental Health
 Foundation of
 West Michigan
 Jennifer Mesler
 Carol Meyers
 Michigan Employee
 Benefit Services, Inc.
 Tarra L. Miedema
 Laura K. Miller
 Bridget M. Mitchell
 Judith A. Mitchell
 Cynthia Molnar
 Nancy Monterusso
 Valery Moody
 The Moore Brower
 Charitable Fund
 Kimberly R.
 Moore-Pimpleton
 Minnie Morey
 MorningStar Health

Kristine Botsford
 Mullendore
 LaRae G. Munk
 Lee and Susan
 Murphy
 Myers Nelson Dillon
 & Shierk, PLLC
 Diane L. Nagelkirk
 Natural Concrete
 Artistry
 Janet and David Neff
 Marie Neil
 Patricia M. Nelson
 Network 180
 Access Center
 Network Reporting
 Newton, Frank,
 Blickley & Hubbard
 Jan Nichols
 Jennifer Niemann
 Amy Norkus
 North College
 Block Club
 North Kent Guidance
 Services, LLC
 Bruce W. Nugent
 Carole Nugent
 Jeffrey J. O'Hara,
 Attorney At Law
 James and Deborah
 Oldfield, Jr.
 Denise Oleske
 Pamela K. Olsen
 Eve Lynne O'Rourke
 Carolyn S. Otzman
 Lois S. Owens
 Nancy L. Owens
 Diana Pace
 Carol Paine-McGovern
 Palestine Shrine No. 1
 Karen L. Palmore
 Jennifer A. Parks
 Parkwood
 Presbyterian Church
 Wendy M. Parr
 Kathy Partogian
 Emily Partridge
 Jennifer Pascua
 Joann A. Paul
 Theresa L. Pawloski
 Laura Perry
 Stephen M. Pestka
 Mary Peterson
 Danielle A. Phillips
 Karen Pieper
 Karen L. Pierre, DDS
 Terri L. Piersma
 Lisa Pietrzak
 Katherine A. Piirala
 Pioneer Construction
 Jane Podolak
 Lynne E. Pope
 M.C. Porter
 Sally A. Prieto
 Principal Financial
 Group
 Brent and Page Rector
 Therese Reilly
 Mary Jane Rhoades
 Shlynn Rhodes
 Kimberly Kay
 Heather Riggle
 Right Management
 Consultants
 The Right Place, Inc.
 Lisa J. Rios
 Robbins Lock Shop, Inc.
 Rhonda A. Romatz
 Sharon Rosenblum

Linda L. Rossman
Danielle Rowland
Stella A. and
Charles L. Royce
Royce Rolls Ringer
Company
Shawn Ruetz
Pamela B. Rush
Barbara Rylko-Bauer
Nancy and
Emil Sabolish
Celia Said
Anne Saliers
Sassy, Inc.
Teresa Fleming
Julie Schaefer-Space
Lisa M. Schichtel
Sheila and
Devin Schindler
Joan Schleaf
Kathy Schmidt
Judy and John
Schneider
Louis and
Connie Schultz
Linda S. Schultz
Doreen A. Schwartz
Karen Schwarzwald
Paula Scott
Kevin Sehlmeier
Judy Sernick
Mindy Seufert
Grace Oldenbroek
Shearer
Kathlene A. and
Adam J. Sheridan
Sherlund, Faber
& Van Meter
Debra E. Shimmel
Melinda Shull
Diana R. Sieger
Florence B. Silverstein
Jennifer Rae Simpson
J. Elaine Singer
Eva Sitek
Helen and
Jerome Smith
Jill A. Smith
Julia P. Smith
Mary E. Smith
Patricia C. Smith
Arneada
Smith-Alexander
Jeffrey A. and
Linda J. Smithwick
Snow United
Methodist Church
Amy Snow-Buckner
Social Security
Administration
Employees
Amanda Socher
Linda Southwell
Alice St. Clair
Diane D. St. Claire
Carly Starin
Dan Stauffer
and Monique
Salinas-Stauffer
Margaret Stekete
Susan H. Stekete
Mary Stevens
Ruth S. Stevens
Jo Ann Sting
Mary Stinson
Julianne Christianson
Stivers
Cindy Storer
Michele Suchovsky
Mary Sullivan
Ann Sullivan Soet

Bonnie Sue Swart
Phyllis Syrek
Edris Takeda
Judeth Tamar
Newham
Lisa Tamblin
Melvene Tardy
Julie Tasker
Susan Taylor
Judith Teater
Kathleen Teichman
Temple Emanuel
Karen Terpstra
Patricia Terze Esch
Janet W. Thompson
Sue Thompson
Colleen Tobin
Matt L. Tomasiewicz
Wanda Tomohy
Beth L. Topp
Nancy M. Torrey and
David Hirschman
Carol L. Townsend
Trivalent Group
Thomas N. Truesdale
Tamara A. Unger
UPwords Inc.
US Signal
Company, LLC
Stacy L. Van Dyken
Hattie Van Haaften
Sherry Van Vugt
Kathryn A. Vance
Dr. Patricia L.
VanDenBrink
Sheryl and Michael
Vander Baan
C. Randal Vander Hoff
Jennifer Vander Molen
Beth VanderKolk
Rita and Gary
VanderVen
Kim VandeVusse
Amy VanDyke
Jaye VanLenten
Barbara VanNoord
Dean and Vera
VanVelsen
Dawn Vanvolkinburg
Lynn D. VanVugt
Marsha Veenstra
Kristi Veldman
Kara A. Vermeulen
Jessica K. Voelker
Susan Vogel-
Vanderson
Laura Nicole Vos
Deb Wagenaar
Mary A. Wagner
Mindy and Bill
Wakefield
Mary Ann Walters
Caroline Waltz
Karen L. Ward
Lois J. Ward
Jennifer A. Wardrop
Maribeth G. Wardrop
Sue Warmels
Marcia A. Warner
Alison R. Waske
Jo Ann Wassenaar
Joyce E. Watson
Suanne Ray
Watt-Stay
Lee Nelson Weber
Diane J. Wechter
Judy Welch
Virginia Welch
Lois White
Tomasiewicz

David and Stephanie
Whitford
Claire B. Whitman
Lonna Wiersma
Larry and Elizabeth
Willey
Willey and
Chamberlain, LLP
Renee' Lobert
Williams
Krischa Winright
Jan Winters
Gera Lyn Witte
David and Susan
Wittenbach
Joanne W. Woods
Carissa Woodwyk
Kathy L. Woronko
Tanya Wurm
Lisa and Tom Wurst
Janet M. Wyllie
Janice and
Christopher Yates
Teresa A. Yeomans
YMCA of Greater
Grand Rapids
Dorothy Sue Yost
Amy L. Young
Bruce and
Susan Young
Johngeryn Young
Laura A. Young
Lori J. Zellers
Denise Zoeterman
Betty Zylstra

**Loney Clinton-
Gordon Circle
(\$30 - \$99)**
**Loney Clinton
Gordon**, a *YWCA*
*volunteer in the
1940s, played a
leading role in the
research that led to
the discovery of the
Whooping Cough
vaccine. Like her
YWCA peers, her
contributions extend
well beyond our
organization and even
our local community.*

Russell D. Ambrose
Amerikam
Anderson Tully
Company
Ruth Arents
Claudia Bajema
Mary A. Banfill
Susan Barfelz
Jane M. Beckering
Mary L. Benedict
Eric and Anita Bennett
Liz Bishop
Kari Bliss
Judy Boorsma
Donna G. Boorstein
Gretchen Bouwsma
Patricia Bowen
Patsy L. Brandow
Sharp
Helen Brinkman
Mark and Kelly
Brushaber
V. Bryan and
Kristen Buskard
Elaine Jordan Busse

Sharon M. Buursma
Wilma Bykerk
Michelle Calkins
Steve and
Nan Carpenter
Elisa Castrulogo
Michael Christensen
Anna Maria Clark
Debra J. Colletti
Trudy M. Collins
Sharon Collins
Ellen Copple
Jay Cragwall
David and Patricia
Wilhelm Dalton
Robert Davenman
Ed and Betsy Degroot
Dermody Truck Sales
Beth Dilley
Christine B. Dionne
Barbara G. Dodge
John and Jane Donk
Jane E. Dykstra
Gary Eldridge
Patricia Eldridge
Thomas and
Jane Elferdink
Jean W. Enright
Daniel Estrada
Arlene Faasen
Alicia M. Fabiano
Dr. James and
Gail Fahner
Lynne Ferrell
Deborah R. Fillmore
Snow
Donna J. Fischer
Barbara Fles
Cynthia Fox
Gloria J. Frayer
Kysha and Daniel
Frazier
John and Marilyn Free
Heather and Andrew
French
Carol Gadbois
Joan M. Garety
Georgie's
Consignment
Clothing
Jacqueline Gilmore
Girl Scouts Michigan
Trails Troop 2365
Shelly Gomez
Diane Goller and
David Murkowski
Grand Rapids Area
Chamber of
Commerce
Linda S. Griggs
Kathleen Hagbom
Cathy Hardin
Dawn Harmon
Randall and Marcia
Ann Hekman
Peggy Helsel
Jane Hendriksma
Kathy Higgins
Dianette Hight
Paula Hines
Susan and Steven
Hoekstra
Thomas P. Hogan
Pamela Holtz
Sara Homeyer
Aletha Honsowitz
Rachel Hood
Dr. and Mrs. Richard
Horvitz
Cynthia Black Hosner
Howard, PC

Lisa Howe
 Sharon Hughes
 Dave and Jeanne
 Huizenga
 Cindy M. Idema
 Elaine Sterrett Isely
 Jenison Christian
 School Reserved
 Jennifer Johannsen
 Bari Stanton Johnson
 JustMediation PLC
 Barbara and
 Michael Karluk
 Mary Jane and
 Robert Keeler
 Beth Kelly
 Ruth E. Kelly
 Judith Kienitz
 Denise Knight
 Evonne A. Kok
 Jennifer Kolk
 Adam Komar
 Kellee A. Koncki
 Cindy Koster
 Andrea Kragt
 Madelaine Lane
 Claire R. Larson
 Jeanine Nemesi
 Laville
 Bridget Lewakowski
 Debbie and
 Steve Locke
 Judge Benjamin H.
 Logan
 Lisa Luckey
 Heather and
 Michael Lunt
 Barbara P. Marcus
 Barbara S. Marfia
 Linda Martin
 Susan M. Mason
 Carol Masselink
 Donald McCarthy
 Meagan T. McCarthy
 Timothy McMorrow
 Kate McNamara
 Stephanie McNamara
 David Medema
 Marcille Meeuwes
 Meijer Credit Union
 Men's Resource
 Center
 Mercantile Bank of
 Michigan
 Kelly Merwin
 James Mika
 Carla Miller
 Nelson Miller
 Gary A. Moore
 Dorothy Morris
 Nancy Mroczkowski
 Mary L. Mulder
 Katherine E.
 Nagengast
 Bonnie Nawara
 Jennifer E. Nichols
 Mark Nitzel
 Patrick and Therese
 Partridge
 Peninsular Chapter 65
 OES
 Janet Peterson
 Terri Peterson
 Penny Peticolas
 Elizabeth A.
 Wetenkamp Plain
 Michael J. Polkowski
 Delanie P. Pope
 Yvonne M. Powers
 Anthony G. and
 Margaret J. Prusinski

Ida Prusinski
 Lois Quillan
 Clare A. Raaymakers
 Lupe Ramos-Montigny
 Carole Redwine
 Sue Rios
 Marjorie B. Roegge
 Melanie Rogers
 Jerilyn Rolston
 Rhonda Rupp
 Saturn of Grand Rapids
 Stasia Savage
 Vernis Schad
 Barbara J. Scheid
 Weldon Schwartz
 Joseph and Margaret
 Scoville
 Vickie Lynn Seidl
 Constance Seifullah
 Joyce Serbowicz
 Sherry Singer
 Doreen Smith
 Jude M. and
 Doug P. Smith
 Rebecca Smith-
 Hoffman and
 Jack L. Hoffman
 Sara J. Smolenski
 Starbucks
 Janice Starnes
 Heidy and
 Martin Starnish
 Sterling Protocol, LLC
 Ellen P. Stuart
 Judge and Mrs. Paul
 Sullivan
 Michelle Sytsma
 Bonnie Taylor
 Lori C. Tennenhouse
 Jennifer and
 Ron Timmer
 Darcy Tomkins
 Mark A. and Ann L.
 Trusock
 John and Cheryl Tully
 Pam VandeKerkhoff
 Dawn Van Hoven
 Jennifer Lynn
 Vanskiver
 Nicole Marie
 Villanueva
 Robert and
 Christine Wait
 Susan M. Walter
 Judy L. Walton
 Bessie L. Ward
 Jennifer Waugh
 Joyce H. Weiblen
 Alexandria Weir
 Margaret C. Willacker
 Amy and Paul Wolbert
 Joanne Wolfe
 Mary Jo Woronko
 Marilyn Zack
 Phyllis Zimmerman

Members

Rosemary Anderson
 Paul Arnold
 Sue Ellen Bandyk
 Juliann Bidwell
 Judge Patrick Bowler
 Mary and Damian
 Casey
 Ray and Marian
 Clausen
 Mike and Karen
 Constantino
 Thomas S.
 Dombrowski

Bart and Constance
 Erickson
 Ellie Frey
 Falinda S. Geerling
 Trenesha Goebel
 Christy Greyzck
 Jan Heniser
 Joan and Terry Hurt
 Bonnie Joustra
 Suzanne M. Katerberg
 Linn M. Keller
 Mary Kay Kempker-
 VanDriel
 Karen Klomp
 Jane Kreha
 Janet Lawrence
 Barbara Loveland
 Michael Lyman
 Alice Marsh
 Waneta and Donald
 Meyers
 Lynda M. Nance
 Virginia Neuman
 NONA Salon
 Jana and Wayne
 Norlin
 Jamie Owen-
 DeSchryver
 Beatrice Panfil
 Kathryn Post
 Claire M. Postma
 Linda Powell
 Mary Beth Quillin
 Sherry Redding
 Lana Rose Lie
 SA Prevention Team
 Carol Seacord
 Melissa Seguin
 Leonard Slott
 Julie Steinbeck
 Carol Tiuhonen
 Scott VanderLeek
 David Weston
 Thomas L. Wood

In-Kind Gifts

Access Business
 Group
 Lynne Afendoulis
 All Souls Community
 Church
 Marcia Allen
 Altrusa International
 Tricia Alyne
 American Legion
 Auxiliary,
 5th District
 Sherri Andenno
 AT&T Michigan
 Lynn Baker
 Leslie J. Ball
 Banana Republic
 Colleen Barber
 Sona Barnes
 Maureen Bartz
 Bath and Body Works
 Judy Batts
 Megan Baum
 Karen Beard
 Toni Beatty
 Bob Berkeley
 BETA Design
 Group, Inc.
 Brittany Bissell
 Blythefield Hills Baptist
 Church
 Alan Bolter
 Cozette Borgerson
 Lexie Botruff
 Patricia Bowen

Dawn Bredeweg
 Dawn Brown
 Janean Brown
 Brownie Troop #3348
 Kristen Bryant
 Mary Buikema
 Ted Burba
 Dana Burd
 Kara Burd
 Orvall Burgess
 Ted Burlea
 Colleen Burns
 Mary Ellen Burton
 Mary K. Butler
 Steve and
 Nan Carpenter
 Mary Carrier
 Mary Lynn Casler
 Marie Catrib
 Susan Celadilla
 Central Reformed
 Church
 Yvonne Chase
 Mary Pat Chelsky
 Sue Clapp
 Caitlin Colby
 Comeria Bank
 Community Builders
 Rebecca Cone
 MaryBeth Conville
 Don and
 Cindy Cooper
 Barbara Corbin
 Carolyn Smith Corbin
 Frank Coronado
 Costco
 Michael Couch
 Kay J. Courtney
 Michele Coyne
 Holly Damstra
 Lisa DeFerrari
 Teresa DeJager
 Delta Sigma Theta
 Sorority
 Peggy A. DePersia
 Melissa DeSota
 Curt and Kim DeVries
 Scott and
 Tania DeVries
 Ausma Dewildt
 Deb DeWitt
 Joan DeWitt
 Kim Dickinson
 Janet Dietsch
 Kim Dixon
 Dollar Tree
 Vickie Dukes
 Gloria Jean and
 Gene Dummer
 Steffany Jo Dunker
 Therese Dykstra
 East Kentwood
 Big Give
 Eastern Floral
 Eastminster
 Presbyterian Church
 Kim and Don Eves
 Express-Woodland
 Shopping Center
 Fairway CRC
 Carol Farquhar
 Kathy Farquharson
 Lori Fenstermaker
 Patricia Fielder
 Char Firlik
 Sharon Flickinger
 Sandra Fonger
 For His Glory
 Ministries
 International
 Chris Ford

Cherie Fox
 Cynthia Fox
 Kim Gage
 Michelle Gallery
 Marion Gauthier
 Gemini Publications
 Raymond Gezon
 John Giddens
 Girl Scout Troop 1815
 Grand Rapids Scottish
 Society
 Grand Valley State
 University Career
 Services
 Grand Valley State
 University Eyes
 Wide Open
 Grand Valley State
 University
 Women's Center
 Veronica Griffin
 Eric Grossnickle
 Jennifer Hale
 Kimberly Hall
 Susanne Hansen
 Sue Harmon
 Charity Harrison
 Paula Hendrikse
 Elizabeth Herro
 Carl Heule
 Hoffman Jewelers
 Dawn Holtrop
 Michael Hopson
 Jennifer Humphrey
 Phaedra Iafano
 David Ignasiak
 J & L Roofing
 J. Martin &
 Associates, Inc.
 Judy Jankowski
 Diondra Jefferson
 Jet's Pizza
 Doris Johnson
 Patti Johnson
 Anamarie Joosee
 Wendy and
 Brian Justema
 Lois K. Kahn
 Tory Kamerling
 Ruth Ann Kasul
 Lisa Keeler
 Margaret Kerr
 Robin A.
 Kidder-DeWent
 Renee Kiefer
 Margie Kindel
 Caryn King
 Kim Klap
 Carol Klein
 Melissa Klemish
 Mary Knatz
 Elena Kolczynski
 Audrey Kortman
 Cindy Koster
 Nelli Koster
 Kraft Meadows
 Middle School
 Jane Kreha
 Jim Kuntz
 Barbara and
 John Langan
 Susan Ledy
 Marilyn Leer
 Robert Lidestri
 The Limited
 Yvonne Lilze
 Marcia Logie
 Marjorie Loughrin
 Daniela Lynn
 Yvonne M. Mabin
 Chris and
 Charlotte Macon
 Max Maile
 Melinda Maile
 Vickie Maile
 Cindy Masse
 Janice K. Maun
 Oranda May
 Dan McFarland
 Julie McKiever
 Meijer, Inc.
 Lea P. Menku
 Jennifer Mesler
 Barbara Meyers
 Carlos S. Meza
 Gordon Moeller
 Paulette Moncure
 Yunorma Moore
 Kathleen A. Mosher
 Rachel Mraz
 Judy Mroz
 Mulick Floral Shop
 Shelly Nederveld
 Joylene Nelson
 Lucy Niedenthal
 Nicole Notario-Risk
 Cynthia Offutt
 Pamela Oliver
 Eric Olsen
 Corry and Bill
 Oosterhouse
 Fern Pasholk
 Melissa Peraino
 Rich Perry
 Paula and Lauren
 Peterson
 Sheryl Paterson
 Rhonda Posthumus
 Gwen Pott
 Marsha Potter
 Wendie and
 David Preiss
 Presto Print, Inc.
 Susan Ralph
 Thomas Randall
 Nancy Rankin
 Sally D. Reeves
 Jennifer Reidsma
 Jennifer Reynolds
 Heather Riggie
 The River/Regent
 Broadcasting
 Penny Rosema
 Stacey Ruddick
 Sue Russell
 Krista Rye
 Ashima Saigal
 Patricia Saladin
 Steve and Laura
 Saltzman
 Jacqueline Sarach
 Theresa Schlosser
 Marjorie Schuchardt
 Margaret Schulte
 Debra Schust
 Deb Schutmaat
 Brooke E. Scott
 Chrisa Sellas
 Dane Sexton
 Sue Shaffer
 Louise Shaw
 Debra E. Shimmel
 Karen N. Shively
 Connie Sieplinga
 Jackie Sleeman
 Barbara Small
 Jeff Smith
 Smokey Bones
 Barbeque & Grill
 Smooch Beauty
 Boutique
 Spirit Dreams
 St. Pius X Women's
 Bible Study
 Michael and
 Mary Stearns
 Dana Stein
 Susan A. Stoddard
 Richard Strong
 Sandy Strong
 Diana Swanson
 Lydia Sweetman
 Cathy and
 Joseph Szivan
 Melvane Tardy
 Tim TenBrink
 Mike and Kelly
 TenBrock
 Debbie Thieme
 Sandra Thomas
 Ali Thomsen
 Jill Tiefenbach
 Jane Tierney
 Jennifer and
 Ron Timmer
 TrimQuest
 Linda Turner
 Two Men and a Truck,
 Grand Rapids North
 Renae Uturo
 Kathryn Van Dyke
 Kris Vanden Berg
 Dr. Patricia L.
 VanDenBrink
 Jennifer Vander Molen
 Betsy Vandercook
 Jaye VanLenten
 Laura V'Dovick
 Terie Vickery
 Victoria's Secret -
 Grandville
 Nicole Marie
 Villanueva
 A. S. Vry
 Kathy L. Waite
 Kathleen Walsh
 Bessie L. Ward
 Norma Watcher
 Tracy and Kevin
 Weberg
 Roxanne Wilda
 Marie Wilfong
 Patricia Wilkinson
 Lori Wiswell
 WLHT 95.7
 Michelle Wolner
 Women's Lifestyle
 Magazine
 Tera Wozniak
 WZZM TV13
 Sally Zarafonetis
 Maria Ziegler
 Zonderkidz
 Pam Zuidgeest
**Memorial/
 Recognition
 Gifts**
 Mr. William Casey
Diane Casey
 Ray and Marian
 Clausen
Mildred Meyers
 Stephen D. Cohle
Dr. Gloria Kohut
 Andy and Pam
 Daugavietis
Mary Ellen Harmen
Judy Lloyd
 Bart and Constance
 Erickson
Madelin Erickson
 Dr. James and Gail
 Fahner
Dr. Barbara Wynn
 Carlene Grassmid
Tina Hartley-Malivuk
 Janet Haynes
Judy Lloyd
 Barbara and Michael
 Kartuk
Gloria Kohut
 Ms. Swanee Kooistra
Clare Raaymaker
 Sue Koppenol
Carrol Cook
 Laboratory
 Pathologists, P.C.
Dr. Gloria Kohut
 Debbie and Steve
 Locke
Judy Lloyd
 Ms. Janis A. Lunquist
Elizabeth Humphrey
 Ms. Julia M. Malpass
Carolyn Wilson
 Ms. Theresa M. Mairn
Stella Nowak
 Mr. and Mrs. Roy May
Mildred Meyers
 Ms. Katherine E.
 Nagengast
Judy Lloyd
 Ms. Virginia Neuman
Mildred Meyers
 Shirley Nevins
Mildred Meyers
 Patrick and Therese
 Partridge
Judy Lloyd
 Janet Peterson
Mildred Meyers
 M. C. Porter
Virgilia Wade
 Sherry Redding
Deborah Gould
 Gary and Joyce Reid
Mildred Meyers
 Michael Shields
Cathy Bartold
 Karen Schwarzwaldner
Carla Blinkhorn
 Daniel S. Stauffer
Horacio Salinas
 Ms. Cynthia Storer
Sandra Storer
 Nancy M. Torrey
Eva Sitek
 Dr. Patricia L.
 VanDenBrink
*George and Dorothe
 Gira*
 Caroline S. Waltz
Annice Starr
 Ms. Diane J. Wechter
*Dr. William J.
 Wechter*
 Ms. Joyce H. Weiblen
M. Doris Corbett
 David and Stephanie
 Whitford
Jodi Eikenhout

YWCA Caroline W. Putnam Planned Giving Heritage Society



*Caroline W.
Putnam*

In recognition of her steadfast commitment to the women and girls of our community, the Caroline W. Putnam Heritage Society honors the generosity of its namesake whose gift during the early part of the twentieth century became the cornerstone of today's YWCA. The Putnam Heritage Society recognizes those individuals with similar personal commitments who have graciously made estate gift arrangements to eventually benefit the YWCA and those it serves.



MICHIGAN
DOMESTIC VIOLENCE
PREVENTION &
TREATMENT BOARD



Heart of West Michigan
United Way



MICHIGAN
women's
FOUNDATION

ywca services

The YWCA of West Central Michigan has been a place of hope, healing and renewal for over one hundred years. During that time, the YWCA has renewed itself in response to the changing needs of women in our community. Today, we are working to end violence against women and children - by helping victims heal, helping survivors thrive and empowering our community through prevention, education and advocacy. YWCA services work in concert to combat the pervasive violence against women and children that debilitates individuals, destroys families, and undermines our community.

Crisis Services and Referral Information

Domestic Violence

24-Hour Crisis Line (616.451.2744)

Emergency shelter for victims of domestic violence and their dependent children for up to 15 days.

Sexual Assault

24-Hour Crisis Line (616.776.RAPE)

As part of our community's response to sexual assault, the YWCA provides comprehensive, timely and sensitive medical-forensic examinations on a 24-hour, on-call basis for females and males 13 years and older.

Short-Term Crisis Support

(616) 459-4652, M-Th 8am-6:30pm

F 8:30am-Noon

For victims and survivors of domestic violence, childhood sexual abuse, or adult sexual assault.

Transitional and Long Term Housing and Supportive Services

(616) 459-4652, M-Th 8am-6:30pm

F 8:30am-Noon

To strengthen a domestic violence survivor's ability to maintain a safe and independent life, the YWCA provides transitional and longer-term housing, employment, advocacy and legal assistance.

YWCA Safe Connections

(616) 459-7062 ext. 292

The YWCA's supervised visitation and exchange program provides safe, quality parenting time between children and non-custodial parents for families where domestic violence, sexual abuse or stalking has been present.

Counseling Services

Therapy and Counseling

(616) 459-4652, M-Th 8am-6:30pm

F 8:30am-Noon

- for survivors of domestic violence and their children
- for survivors of sexual assault and their families
- for child victims and their families who are experiencing the trauma of incest or non-familial molestation

Support Groups

(616) 459-4652, M-Th 8am-6:30pm

F 8:30am-Noon

- for adult women who are survivors of domestic violence, childhood sexual abuse and/or adult sexual assault
- for teen survivors of sexual assault

Group Therapy and Counseling

(616) 459-4652, M-Th 8am-6:30pm

F 8:30am-Noon

- for victims and survivors of domestic violence, childhood sexual abuse and/or adult sexual assault
- for men seeking to stop abusive behavior

Girls Incorporated® at the YWCA West Central Michigan

(616) 459-7062 ext. 160

In order to reduce girls' vulnerability to abuse, the YWCA offers programs designed to strengthen their safety skills, build their self-esteem and confidence, help them set boundaries, and develop healthy relationships with adults—all key elements to building healthy young women.

24 hour confidential crisis lines

domestic violence
616.451.2744

sexual assault
616.776.7273 (RAPE)

25 Sheldon Blvd., SE
Grand Rapids, MI 49503
phone 616.459.4681
fax 616.459.5423
www.ywcawcmi.org